

SEPTEMBER 11 - NEW ULM, TX

# Sandy Creek Ranch Bred Cow Sale



[www.SCRbrangus.com](http://www.SCRbrangus.com)



# WELCOME



Howdy,

Welcome to Sorensen Sandy Creek Ranch (SCR).

Paul and Staci Sorensen started SCR in 2005 with 86 acres and 12 head of Brangus cattle. As the years went by, this hobby grew and in 2014 SCR expanded into what it is today with 400 cows and 14 registered sires. The vision is to take the best commercial Brangus cows and breed them to registered sires, resulting in Brangus Premium Gold Calf. You will see that no external operations are used to grow or finish the animals. From the time the calf hits the ground until the time it leaves the property; the TEAM here has been caring for and raising the cattle. As of 2016, SCR has added a Registered Brangus operation that includes the purchase of several registered cows that has grown to over 30 head. They will be available at future auctions as we broaden our offering. The TEAM here at SCR is excited to share our passion with you and hope you have a great experience at this year's sale.

# OUR TEAM



**Paul Sorensen**  
*Owner*  
713-851-4130



**Staci Sorensen**  
*Owner*  
713-899-7757



**Brady Schubert**  
*Ranch Manager*  
979-251-4526



**Quintes Stark**  
*Business Manager*  
979-203-4692



**Michael Anderson**  
*Head of Grounds  
Maintenance & Cowboy*  
713-446-4171

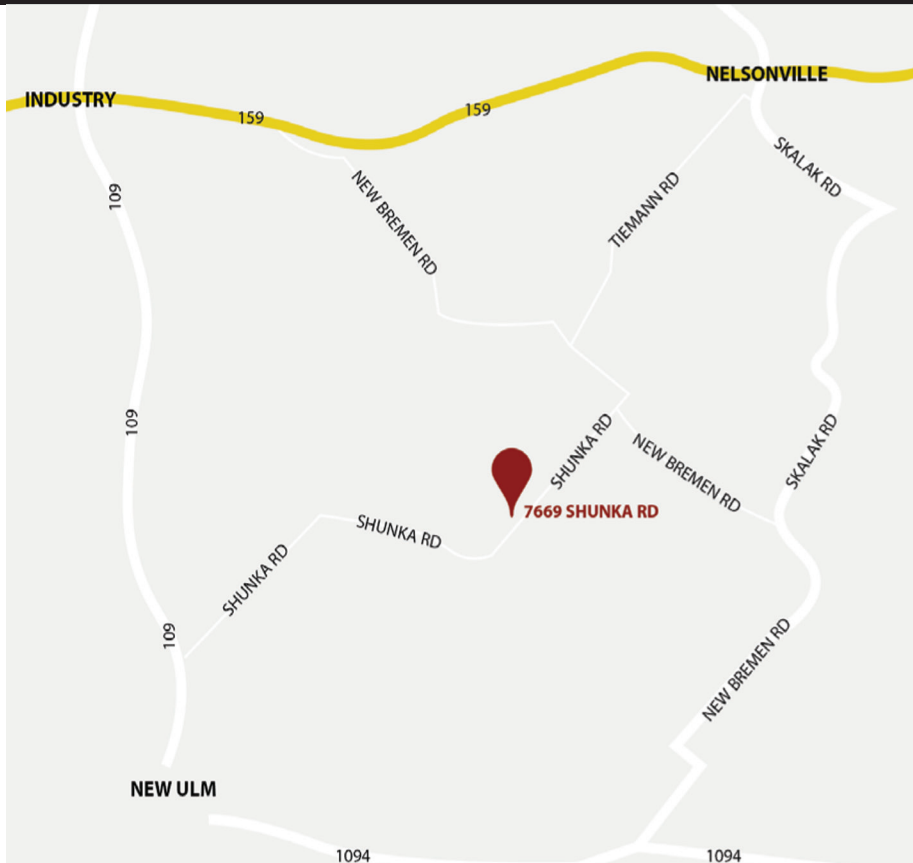


**Ross Janish**  
*Head Farrier  
and Cowboy*  
979-203-3505



**Garrett Rinn**  
*Head of Maintenance &  
Equipment Operator*  
979-277-4696

# INFORMATION



## Directions

**7365 Shunka Rd  
New Ulm, TX 78950**

## Schedule

**Friday, September 10**

12:00pm-8:00pm - Cattle viewing

**Saturday, September 11**

9:00am-11:00am - Cattle viewing

12:00pm-1:00pm - Lunch

1:00pm - Auction starts

## Hotel Recommendations

**B&B - Schulz New Ulm**

*David Schulz- 979-277-2202*

(New Ulm, TX)

**Hampton Inn and Suites**

(Brenham, TX, 14 miles from SCR)

## Internet Viewing & Bidding

Go to [www.SCRbrangus.com](http://www.SCRbrangus.com) and follow the prompts to either log in (if you've used our system before) or become a registered bidder.

We recommend using the internet browsers Chrome or Firefox, not Safari.

Bidders are required to register for each sale they wish to participate in. Viewers are not.

A credit card is required for online verification but will not be billed. Upon notification that you've placed a winning bid on an animal, the sale will invoice you with mailing instructions for payment by check, wire transfer or money order.

You can place absentee and max bids if you are unable to be online live during the sale. These bids are NOT seen by anyone other than SCR staff and are placed automatically by our system to purchase the animal at the lowest price possible for you.

There is no fee to participate and no buyer's premium. Buyers are responsible for coordinating their own hauling.

All terms and conditions listed in the sale catalog apply to on-line bidding.

For additional assistance contact **Quintes Stark**, 979-203-4692.



# TERMS & CONDITIONS

## **Terms & Conditions:**

All cattle sell under the terms and conditions listed in this catalog.

## **Payment:**

Cash, credit card or check at end of sale.

## **Liability:**

All persons attending the sale do so at their own risk. The sale host and/or the sale management and/or consignors assume no liability for accidents, theft or damages on the sale facility site.

## **Health Terms:**

All cattle selling will be accompanied with a valid health certificate to be shipped anywhere in the continental United States.

## **Bidding:**

Each animal will be sold to the highest bidder with reserve.

## **Bidding Disputes:**

The auctioneer in charge will settle any disputes as to bids, and his decision on such matters shall be final.

## **Terms:**

Terms of the sale are cash or check to the clerk at the conclusion of the sale.

## **Possession:**

Immediately after the animal is sold, it will be the sole risk and responsibility of the buyer thereof, but possession cannot be obtained until payment is made.

## **Certification:**

A certificate of registration will be furnished and transferred to the purchaser on each lot in the sale, including calves at side.

## **Health:**

Bidders should consider individual state requirements before purchasing.

## **Guarantee:**

Breeder guarantees are strictly between the individual consignor and the purchaser at the sale. All calves at side are given to the purchaser free and carry no guarantee.

## **Notice:**

The purchaser must look to the seller for fulfillment of all guarantees and representations made hereunder.

## **Pedigrees:**

The seller has furnished the information on the pedigrees of the animals announced.

## **Announcements:**

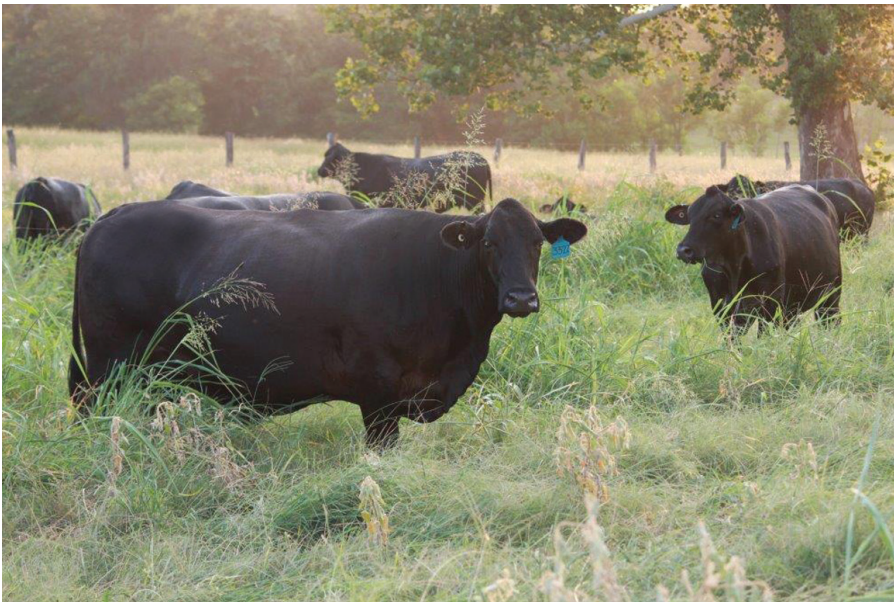
All announcements from the auctioneer block shall take precedence over information printed in the catalog.

## **Contract:**

The above terms and guarantees shall constitute a contract between the buyer and seller of each animal sold. No cattle may be loaded up until after the sale.

## **Buyer Responsibility:**

Prospective buyers or bidders at the sale should listen carefully to all announcements made from the auction block by the auctioneer, pedigree reader, or seller on each animal that is sold. Buyers should acquaint themselves with terms concerning the breeder status, fertility, and health papers on each animal sold. It is the responsibility of the buyer to be aware of health regulations for transportation of animals into the state of their residence. By doing so, a buyer can save himself many problems and also enable himself to be more competent and qualified buyer.



#1 0930 PEN A1

AGE	WEIGHT
5	1375
BRED/OPEN	MONTHS BRED
BRED	7
BRED TO	
8F	

.....

.....

.....

#2 606 PEN A1

AGE	WEIGHT
4	1315
BRED/OPEN	MONTHS BRED
BRED	7
BRED TO	
924E7	

.....

.....

.....

#3 616 PEN A2

AGE	WEIGHT
4	1505
BRED/OPEN	MONTHS BRED
BRED	7
BRED TO	
889B51	

.....

.....

.....

#4 617 PEN A2

AGE	WEIGHT
4	1490
BRED/OPEN	MONTHS BRED
BRED	7
BRED TO	
924E7	

.....

.....

.....

#5 220 PEN A3

AGE	WEIGHT
5	1440
BRED/OPEN	MONTHS BRED
BRED	6+
BRED TO	
8F	

.....

.....

.....





#6 510 PEN A3

AGE	WEIGHT
5	1165
BRED/OPEN	MONTHS BRED
BRED	6+
BRED TO	
129D44	

.....

.....

.....

#7 607 PEN A4

AGE	WEIGHT
4	1305
BRED/OPEN	MONTHS BRED
BRED	6+
BRED TO	
889B51	

.....

.....

.....

#8 644 PEN A4

AGE	WEIGHT
4	1430
BRED/OPEN	MONTHS BRED
BRED	6+
BRED TO	
129E7	

.....

.....

.....

#9 672 PEN A5

AGE	WEIGHT
4	1570
BRED/OPEN	MONTHS BRED
BRED	6+
BRED TO	
889B51	

.....

.....

.....

#10 705 PEN A5

AGE	WEIGHT
3	1200
BRED/OPEN	MONTHS BRED
BRED	6+
BRED TO	
889D92	

.....

.....

.....



#11 221F PEN B1

AGE	WEIGHT
3	1460
BRED/OPEN	MONTHS BRED
BRED	6
BRED TO	
889B51	

.....

.....

.....

#12 322E PEN B1

AGE	WEIGHT
4	1265
BRED/OPEN	MONTHS BRED
BRED	6
BRED TO	
8F	

.....

.....

.....

#13 325F PEN C1

AGE	WEIGHT
3	1220
BRED/OPEN	MONTHS BRED
BRED	6
BRED TO	
889D94	

.....

.....

.....

#14 610 PEN C1

AGE	WEIGHT
4	1290
BRED/OPEN	MONTHS BRED
BRED	6
BRED TO	
889B51	

.....

.....

.....

#15 627 PEN D1

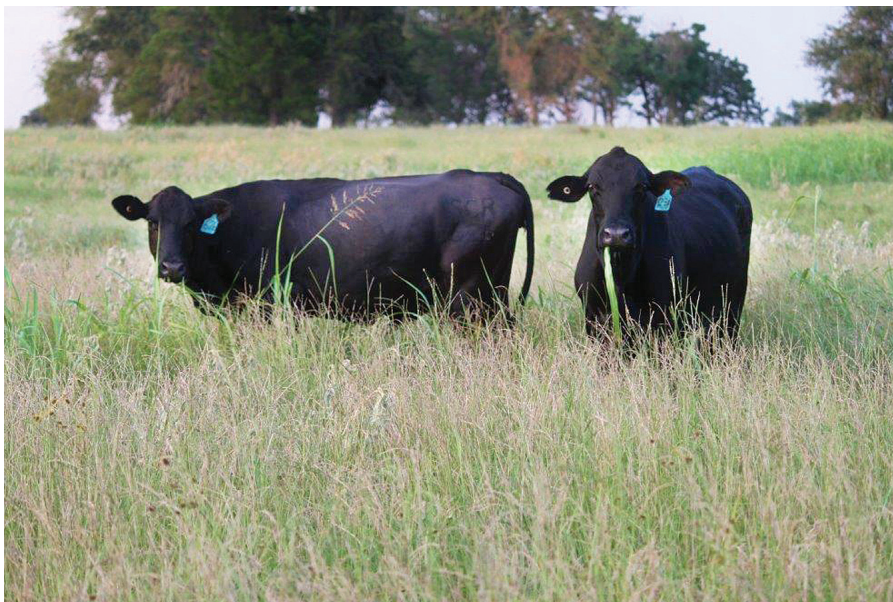
AGE	WEIGHT
4	1330
BRED/OPEN	MONTHS BRED
BRED	6
BRED TO	
889B51	

.....

.....

.....





**#16 628** PEN D1

AGE	WEIGHT
4	1420
BRED/OPEN	MONTHS BRED
BRED	6
BRED TO	
889B51	

.....

.....

.....

**#17 631** PEN B2

AGE	WEIGHT
4	1360
BRED/OPEN	MONTHS BRED
BRED	6
BRED TO	
924E7	

.....

.....

.....

**#18 642** PEN B2

AGE	WEIGHT
4	1570
BRED/OPEN	MONTHS BRED
BRED	6
BRED TO	
889B51	

.....

.....

.....

**#19 652** PEN C2

AGE	WEIGHT
4	1310
BRED/OPEN	MONTHS BRED
BRED	6
BRED TO	
889B51	

.....

.....

.....

**#20 665** PEN C2

AGE	WEIGHT
4	1300
BRED/OPEN	MONTHS BRED
BRED	6
BRED TO	
889B51	

.....

.....

.....

#21 670 PEN D2

AGE	WEIGHT
4	1170
BRED/OPEN	MONTHS BRED
BRED	6
BRED TO	
924E7	

.....  
.....  
.....

#22 697 PEN D2

AGE	WEIGHT
4	1270
BRED/OPEN	MONTHS BRED
BRED	6
BRED TO	
889B51	

.....  
.....  
.....

#23 689 PEN B3

AGE	WEIGHT
4	1260
BRED/OPEN	MONTHS BRED
BRED	6
BRED TO	
889B51	

.....  
.....  
.....



Herd Sire: 889D92

#24 692 PEN B3

AGE	WEIGHT
4	1225
BRED/OPEN	MONTHS BRED
BRED	6
BRED TO	
19B	

.....  
.....  
.....

#25 708 PEN C3

AGE	WEIGHT
3	1475
BRED/OPEN	MONTHS BRED
BRED	6
BRED TO	
924E7	

.....  
.....  
.....





**#26 133F** PEN C3

AGE	WEIGHT
3	980
BRED/OPEN	MONTHS BRED
BRED	5+
BRED TO	
889D92	

.....

.....

.....

**#27 615** PEN D3

AGE	WEIGHT
4	1375
BRED/OPEN	MONTHS BRED
BRED	5+
BRED TO	
889B51	

.....

.....

.....

**#28 623** PEN D3

AGE	WEIGHT
4	1305
BRED/OPEN	MONTHS BRED
BRED	5+
BRED TO	
129E7	

.....

.....

.....

**#29 629** PEN B4

AGE	WEIGHT
4	1315
BRED/OPEN	MONTHS BRED
BRED	5+
BRED TO	
889B51	

.....

.....

.....

**#30 636** PEN B4

AGE	WEIGHT
4	1290
BRED/OPEN	MONTHS BRED
BRED	5+
BRED TO	
924E7	

.....

.....

.....



**#31 640** PEN C4

AGE	WEIGHT
4	1235
BRED/OPEN	MONTHS BRED
BRED	5+
BRED TO	
889B51	

.....

.....

.....

**#32 649** PEN C4

AGE	WEIGHT
4	1390
BRED/OPEN	MONTHS BRED
BRED	5+
BRED TO	
8F	

.....

.....

.....

**#33 658** PEN D4

AGE	WEIGHT
4	1375
BRED/OPEN	MONTHS BRED
BRED	5+
BRED TO	
889B51	

.....

.....

.....

**#34 661** PEN D4

AGE	WEIGHT
4	1140
BRED/OPEN	MONTHS BRED
BRED	5+
BRED TO	
8F	

.....

.....

.....

**#35 679** PEN B5

AGE	WEIGHT
4	1430
BRED/OPEN	MONTHS BRED
BRED	5+
BRED TO	
889B51	

.....

.....

.....



#36 703 PEN B5

AGE	WEIGHT
3	1100
BRED/OPEN	MONTHS BRED
BRED	5+
BRED TO	
889D92	

.....  
.....  
.....

#37 704 PEN C5

AGE	WEIGHT
3	1370
BRED/OPEN	MONTHS BRED
BRED	5+
BRED TO	
8F	

.....  
.....  
.....

#38 721 PEN C5

AGE	WEIGHT
3	1075
BRED/OPEN	MONTHS BRED
BRED	5+
BRED TO	
889D92	

.....  
.....  
.....

#39 751 PEN D5

AGE	WEIGHT
3	1070
BRED/OPEN	MONTHS BRED
BRED	5+
BRED TO	
889D94	

.....  
.....  
.....



#40 128F PEN D5

AGE	WEIGHT
3	1095
BRED/OPEN	MONTHS BRED
BRED	5
BRED TO	
889D92	

.....  
.....  
.....



#41 252F PEN B6

AGE	WEIGHT
5	1250
BRED/OPEN	MONTHS BRED
BRED	5
BRED TO	
8F	

.....

.....

.....

#42 254F PEN B6

AGE	WEIGHT
5	1115
BRED/OPEN	MONTHS BRED
BRED	5
BRED TO	
889B51	

.....

.....

.....

#43 369E PEN C6

AGE	WEIGHT
4	1250
BRED/OPEN	MONTHS BRED
BRED	5
BRED TO	
8F	

.....

.....

.....

#44 618 PEN C6

AGE	WEIGHT
4	1200
BRED/OPEN	MONTHS BRED
BRED	5
BRED TO	
924E7	

.....

.....

.....

#45 620 PEN D6

AGE	WEIGHT
4	1335
BRED/OPEN	MONTHS BRED
BRED	5
BRED TO	
889B51	

.....

.....

.....

#46 621 PEN D6

AGE	WEIGHT
4	1020
BRED/OPEN	MONTHS BRED
BRED	5
BRED TO	
19B	

.....  
.....  
.....

#47 634 PEN B7

AGE	WEIGHT
4	1025
BRED/OPEN	MONTHS BRED
BRED	5
BRED TO	
19B	

.....  
.....  
.....

#48 641 PEN B7

AGE	WEIGHT
4	1155
BRED/OPEN	MONTHS BRED
BRED	5
BRED TO	
129E7	

.....  
.....  
.....

#49 643 PEN C7

AGE	WEIGHT
4	1550
BRED/OPEN	MONTHS BRED
BRED	5
BRED TO	
889B51	

.....  
.....  
.....



#50 647 PEN C7

AGE	WEIGHT
4	1375
BRED/OPEN	MONTHS BRED
BRED	5
BRED TO	
8F	

.....  
.....  
.....





**#51 659** PEN D7

AGE	WEIGHT
4	1255
BRED/OPEN	MONTHS BRED
BRED	5
BRED TO	
19B	

.....

.....

.....

**#52 660** PEN D7

AGE	WEIGHT
4	1135
BRED/OPEN	MONTHS BRED
BRED	5
BRED TO	
8F	

.....

.....

.....

**#53 664** PEN E7

AGE	WEIGHT
4	1170
BRED/OPEN	MONTHS BRED
BRED	5
BRED TO	
8F	

.....

.....

.....

**#54 691** PEN E7

AGE	WEIGHT
4	1325
BRED/OPEN	MONTHS BRED
BRED	5
BRED TO	
889B51	

.....

.....

.....

**#55 709** PEN F7

AGE	WEIGHT
3	1075
BRED/OPEN	MONTHS BRED
BRED	5
BRED TO	
889D92	

.....

.....

.....

#56 711 PEN F7

AGE	WEIGHT
3	1115
BRED/OPEN	MONTHS BRED
BRED	5
BRED TO	
889D94	

.....  
.....  
.....

#57 731 PEN B8

AGE	WEIGHT
3	1050
BRED/OPEN	MONTHS BRED
BRED	5
BRED TO	
889D94	

.....  
.....  
.....

#58 747 PEN B8

AGE	WEIGHT
3	1300
BRED/OPEN	MONTHS BRED
BRED	5
BRED TO	
541E8	

.....  
.....  
.....

#59 172F PEN C8

AGE	WEIGHT
3	1220
BRED/OPEN	MONTHS BRED
BRED	4+
BRED TO	
889D94	

.....  
.....  
.....



#60 653 PEN C8

AGE	WEIGHT
4	1285
BRED/OPEN	MONTHS BRED
BRED	4+
BRED TO	
889B51	

.....  
.....  
.....

#61 706 PEN D8

AGE	WEIGHT
3	1170
BRED/OPEN	MONTHS BRED
BRED	4+
BRED TO	
731E2	

.....  
.....  
.....

#62 728 PEN D8

AGE	WEIGHT
3	1085
BRED/OPEN	MONTHS BRED
BRED	4+
BRED TO	
541E8	

.....  
.....  
.....

#63 733 PEN E8

AGE	WEIGHT
3	1135
BRED/OPEN	MONTHS BRED
BRED	4+
BRED TO	
889D94	

.....  
.....  
.....



#64 735 PEN E8

AGE	WEIGHT
3	1320
BRED/OPEN	MONTHS BRED
BRED	4+
BRED TO	
889D94	

.....  
.....  
.....

#65 750 PEN F8

AGE	WEIGHT
3	1100
BRED/OPEN	MONTHS BRED
BRED	4+
BRED TO	
889D92	

.....  
.....  
.....





#66 685 PEN F8

AGE	WEIGHT
4	1035
BRED/OPEN	MONTHS BRED
BRED	4
BRED TO	
19B	

.....

.....

.....

#67 718 PEN B9

AGE	WEIGHT
3	1120
BRED/OPEN	MONTHS BRED
BRED	4
BRED TO	
8F	

.....

.....

.....

#68 754 PEN B9

AGE	WEIGHT
3	1185
BRED/OPEN	MONTHS BRED
BRED	4
BRED TO	
889D92	

.....

.....

.....

# PAIRS



#69 645 PEN C9

AGE	WEIGHT
4	1290
BRED/OPEN	CALF DOB
OPEN	5/13/21
CALF SEX	CALF SIRE
H	129D44

.....

.....

.....

#70 701 PEN D9

AGE	WEIGHT
3	942
BRED/OPEN	CALF DOB
OPEN	2/10/21
CALF SEX	CALF SIRE
H	541E8

.....

.....

.....

#71 730 PEN E9

AGE	WEIGHT
3	1120
BRED/OPEN	CALF DOB
OPEN	3/15/21
CALF SEX	CALF SIRE
H	924B28

.....

.....

.....

#72 360 PEN F9

AGE	WEIGHT
5	1200
BRED/OPEN	CALF DOB
OPEN	5/15/21
CALF SEX	CALF SIRE
B	535B7

.....

.....

.....



**#73 379** PEN B10

AGE	WEIGHT
5	1260
BRED/OPEN	CALF DOB
OPEN	5/15/21
CALF SEX	CALF SIRE
B	535B7

.....

.....

.....

**#74 532** PEN C10

AGE	WEIGHT
5	1265
BRED/OPEN	CALF DOB
OPEN	5/15/21
CALF SEX	CALF SIRE
B	924E7

.....

.....

.....

**#75 612** PEN D10

AGE	WEIGHT
4	998
BRED/OPEN	CALF DOB
OPEN	3/26/21
CALF SEX	CALF SIRE
B	129E7

.....

.....

.....

**#76 639** PEN E10

AGE	WEIGHT
4	1085
BRED/OPEN	CALF DOB
OPEN	4/29/21
CALF SEX	CALF SIRE
B	129E7

.....

.....

.....

**#77 656** PEN F10

AGE	WEIGHT
4	1210
BRED/OPEN	CALF DOB
OPEN	3/10/21
CALF SEX	CALF SIRE
B	129D44

.....

.....

.....



[illegible]

# BULL & HEIFER SALE    FEBRUARY 12, 2022



The SCR Team  
is looking forward to seeing you  
at our annual bull and heifer Sale!



[www.SCRbrangus.com](http://www.SCRbrangus.com)



[www.SCRbrangus.com](http://www.SCRbrangus.com)